

# Parent Involvement Survey



Office of  
Parental Involvement

Take a few minutes and let us know your experiences as a parent at your child's school. The Parental Involvement Survey will be available online from March 30<sup>th</sup> through April 24, 2009. Your answers should be based on the current school year. If you have children who attend different schools, please answer the questions with regard to only one school at a time. You may submit a survey for each school.



The Parent Involvement Survey is available online. **Follow the steps!**

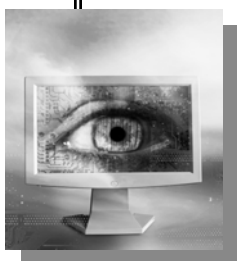
1. [www.dadeschools.net](http://www.dadeschools.net)
2. Click on Parents
3. Access the Survey available in the upper right-hand corner
4. Select the Survey in the language of preference
5. Complete and submit your answers



**It's  
Important!**



If you need help, come to the Parent Resource Center or call the Office of Parental Involvement at 305-995-1233.



*"Connecting Families, Communities, and Schools"*